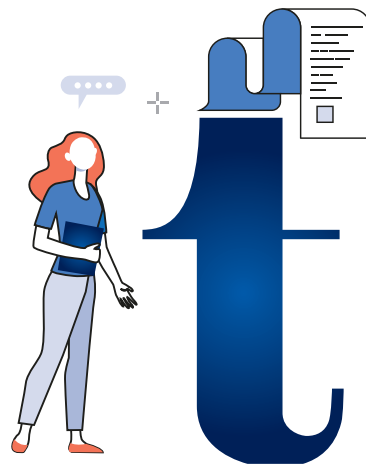
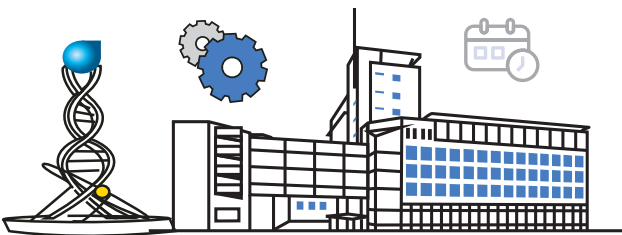
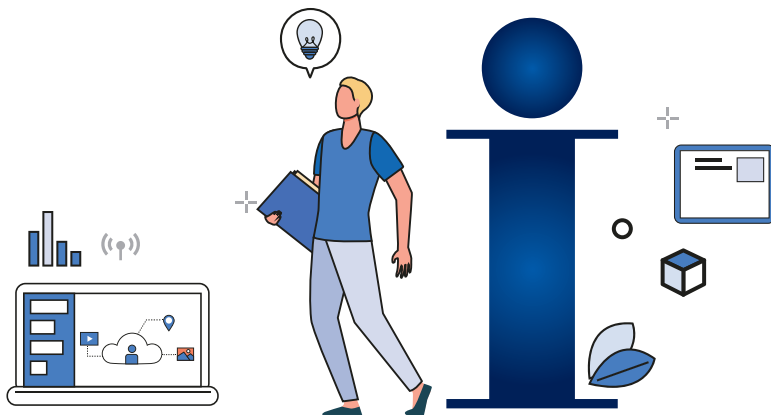




# 2026 Fall Semester KIT Undergraduate

## Guideline for International Students (Freshmen, Transfer Students)

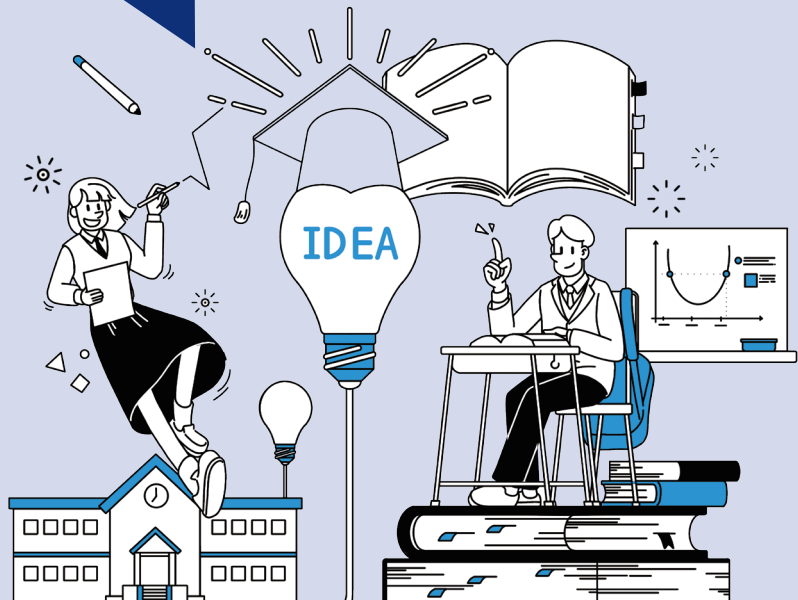


# Contents

I . Admission Schedule .....	1
II . Eligibility and Language Requirements .....	2
III . Departments and Admission Quotas .....	4
IV . Required Documents .....	6
V . Selection Process .....	8
VI . Application Fee .....	8
VII . Online Application Procedure and Notes .....	9
VIII . Additional Information .....	11
(Korean Language Classes, Scholarships, Tuition)	
IX . Contact Information .....	12

## Application Forms [Sample]

[Sample] Application Form .....	13
[Sample] Personal Information Collection and Use Consent Form ...	15
* Apostille Guide .....	16



# I . Admission Schedule

Category	1st Round	2nd Round ※ Only for applicants to the school of REC	Remarks
Online Application	Apr 1– May 13, 2026 (17:00)	Jun 15 – Jul 7, 2026 (17:00)	<ul style="list-style-type: none"> <li>· Online application system (URL will be announced separately)</li> <li>· <b>Submit documents after completing the online application</b> <ul style="list-style-type: none"> <li>– Submit in person or by registered mail</li> <li>– <b>Applicants who fail to submit the documents by the deadline will be disqualified</b></li> </ul> </li> </ul>
Document Submission	Apr 1– May 15, 2026 (18:00)	Jun 15 – Jul 9, 2026 (18:00)	<ul style="list-style-type: none"> <li>– Submit in person or by registered mail</li> <li>– <b>Applicants who fail to submit the documents by the deadline will be disqualified</b></li> </ul>
Interview Candidate Announcement	May 18, 2026	Jul 13, 2026	<ul style="list-style-type: none"> <li>· Posted on the university website and by email in person</li> </ul>
Interview	May 19 – May 21, 2026	Jul 14 – Jul 16, 2026	<ul style="list-style-type: none"> <li>· In-person (Korea) / Online (Overseas)</li> <li>· The date and location will be notified by email</li> </ul>
Admission Results	Jun 2, 2026	Jul 22, 2026	<ul style="list-style-type: none"> <li>· Announcement on website</li> </ul>
Tuition Payment	Jun 8 – Jun 12, 2026	Jul 24 – Jul 30, 2026	<ul style="list-style-type: none"> <li>· Detailed schedule will be announced by email individually at a later date</li> <li>· Within Korean bank hours</li> <li>– <b>Applicants who fail to pay within the deadline will be disqualified.</b></li> </ul>
Certificate of Admission Issuance	Jun 22, 2026	Jul 31, 2026	<ul style="list-style-type: none"> <li>· KIT international office (International Education Bldg. #103)</li> <li>· By email, visit or mail (Mailing is optional upon request)</li> </ul>
Final Graduation Certificate Submission	By Aug 27, 2026 (18:00)		<ul style="list-style-type: none"> <li>· Only for expected graduates</li> </ul>
Orientation & Semester Start	Sep 1, 2026		

※ The above schedule may be subject to change

※ For all departments except the School of REC, only the first round of screening will be conducted for freshman and transfer admissions

※ The School of REC recruits freshman applicants only

## II. Eligibility and Language Requirements

※ Applicants must meet all eligibility, language, and academic requirements

### 1. Eligibility (National Requirement)

National Requirement	Remarks
Both the applicant and their parents must be foreign nationals	<ul style="list-style-type: none"> <li>– The applicant and parents must have obtained foreign nationality before the applicant started an educational program equivalent to Korean high school</li> <li>– Academic qualifications obtained through the Korean GED, homeschooling, or online/cyber learning programs shall not be recognized</li> <li>– If the applicant or parents previously held Korean nationality, a certificate of renunciation of Korean nationality must be submitted.</li> <li>– If a parent is absent due to divorce or death, official government-issued documents proving the situation must be submitted.</li> <li>– Dual citizenship holders of Korea and stateless persons are not eligible for this admission track</li> </ul>

### 2. Language Requirements

※ Only documents that are valid as of the application deadline will be accepted

Department	Language Requirements
All Departments (Except School of REC)	<ul style="list-style-type: none"> <li>– Applicants must submit TOPIK level 4 or higher</li> <li>※ Students are recommended to obtain TOPIK Level 5 before graduation</li> </ul>
School of REC	<p>Korean Track</p> <p>Applicants must meet one of the following requirements</p> <ol style="list-style-type: none"> <li>1. TOPIK Level 3 or higher</li> <li>2. Completion of Level 3 or higher Korean language program at a university or passing a university Korean proficiency test at level 3 or higher</li> <li>3. Completion of King Sejong Institute Intermediate Level 1 or higher or King Sejong Korean Language Assessment (SKA) Level 3 or higher</li> <li>4. Completion of Level 3 or higher of the Korea Immigration &amp; Integration Program (KIIP) or a pre-evaluation score of 61 or higher</li> </ol> <p>※ Students are recommended to obtain TOPIK Level 4 before graduation</p>
	<p>English Track</p> <p>Applicants must meet one of the following requirements</p> <ol style="list-style-type: none"> <li>1. TOEFL iBT 59, IELTS 5.5, CEFR B2, NEW TEPS 202, TOEIC 600 or higher</li> <li>2. Applicants who are citizens of English-speaking countries may submit proof of completion of secondary or higher education in English instead of test scores</li> </ol> <p>* Recognized English-speaking countries include: United States, United Kingdom, Canada, South Africa, New Zealand, Australia, Ireland</p> <p>※ Students admitted through the English track must complete the free Korean language classes provided by the university</p>

## II . Eligibility and Language Requirements

### 3. Academic Requirements

**(Freshman Applicants)** must have **graduated from high school or be expected to graduate**

※ The following are not recognized as valid academic qualifications:

High school equivalency examinations, Homeschooling, Online or cyber-learning programs

**(Transfer Applicants)** Applicants must meet one of the following:

**A. Graduated (or expected to graduate) from a 2- or 3-year college in Korea or abroad**

**B. Completed at least 2 years (4 semesters) at a 4-year university and earned 65 credits or more**

※ If the previous institution has a different academic system, the applicant must have completed at least half of the total credits required for graduation

## III. Departments and Admission Quotas

### 1. Freshman Admission

Campus	Field	Academic Units of selection	Majors	Quotas
Yang-ho Campus	Engineering	School of Architecture, Civil and Environmental Engineering	Architectural Engineering	designated (March intake Only)
			Architecture(5-year program)	
			Civil Engineering	
			Environmental Engineering	
		School of Mechanical Engineering	Mechanical Engineering	designated
			Mechanical System Engineering	
		Dep. of Smart mobility Engineering	Smart mobility Engineering	
		School of Big data & Industrial Engineering	Industrial Engineering	
			Mathematics & Big Data Science	
		School of Materials Science and Engineering	Polymer Science and Engineering	
			Materials Science and Engineering	
		School of Electronic Engineering	Semiconductor System Engineering	
	Electronic System Engineering			
	School of Computer Engineering	Software		
		Computer Engineering		
Artificial Intelligence Engineering				
School of Chemical Materials Engineering	Materials Design Engineering			
	Chemical Engineering			
	Chemical Materials and Bio Engineering			
Dep. of Optical Engineering				
Dep. of Biomedical Engineering				
Humanities & Social Sciences	Dep. of Business Administration			
Shin-pyeong Campus	Engineering	School of Regional Engagement & international Cooperation(REC)	Nanomaterial and Energy Convergence	35 ※ Only for International Students
	Humanities & Social Sciences		Medical IT Convergence	
			Smart Manufacturing System	
			Global Management	

- ※ Freshmen are admitted by department or school, and their major is assigned later according to the academic regulations
- ※ The School of Architecture, Civil and Environmental Engineering is only available for Spring admission (March)
- ※ The School of REC is exclusively for international students
- ※ The School of REC conducts all classes in Korean(Korean track) and in English(English track) at the Shin-pyeong Campus

## III. Departments and Admission Quotas

## 2. Transfer

Campus	Field	Academic Units of selection	Majors	Quotas	Remarks
Yang-ho Campus	Engineering	School of Architecture, Civil and Environmental Engineering	Architectural Engineering	<b>designated (March intake Only)</b>	Select one major to apply for
			Architecture(5-year program)		
			Civil Engineering		
			Environmental Engineering		
		School of Mechanical Engineering	Mechanical Engineering	<b>designated</b>	Select one major to apply for
			Mechanical System Engineering		
		Dep. of Smart mobility Engineering	Smart mobility Engineering		
		School of Big data & Industrial Engineering	Industrial Engineering		
			Mathematics & Big Data Science		
		School of Materials Science and Engineering	Polymer Science and Engineering		
			Materials Science and Engineering		
		School of Electronic Engineering	Semiconductor System Engineering		
			Electronic System Engineering		
		School of Computer Engineering	Software		
			Computer Engineering		
			Artificial Intelligence Engineering		
	School of Chemical Materials Engineering	Materials Design Engineering			
		Chemical Engineering			
		Chemical Materials and Bio Engineering			
	Dep. of Optical Engineering				
Dep. of Biomedical Engineering					
Humanities & Social Sciences	Dep. of Business Administration				

※ The School of Architecture, Civil and Environmental Engineering is only available for Spring admission (March)

※ Transfer applicants are not eligible to apply to the School of REC

## IV. Required Documents

※ KIT may request additional documents if necessary to verify eligibility

※ KIT may request additional documents depending on the applicant's visa status

※ All documents must be in Korean or English; otherwise, a notarized translation must be submitted.

Required Documents	Freshman	Transfer	Remarks
① Online Application (including Personal Information Collection and Use Consent)	●	●	<ul style="list-style-type: none"> <li>- Print and submit the online application form with signature</li> <li>- A photo (3.5 cm × 4.5 cm) is required</li> <li>- Consent for personal data collection is completed online (no separate submission required)</li> </ul>
② High School Graduation Certificate (or Expected Graduation Certificate)	●	-	<ul style="list-style-type: none"> <li>- <b>If not in Korean or English:</b> Submit a Korean/English translation with apostille or consular legalization.</li> </ul>
③ High School Academic Transcript (3 years)	●	-	<ul style="list-style-type: none"> <li>- <b>If in Korean or English:</b> Submit with apostille or consular legalization</li> </ul>
④ Previous University Graduation (Expected Graduation) Certificate	-	●	<ul style="list-style-type: none"> <li>✓ Please carefully read the important notes regarding degree documents below</li> <li>* Transcripts must include percentage-based grades.</li> <li>* Expected graduates must submit a Certificate of Graduation by Aug 27, 2026.</li> </ul>
⑤ Official Transcript of the Previous University	-	●	
⑥ Language Test Score Certificate	●	●	<ul style="list-style-type: none"> <li>- 1 Original or Copy</li> <li>- Refer to Section II-2. language requirements</li> <li>- Only documents that are valid as of the application deadline will be accepted</li> </ul>
⑦ Alien Registration Card (both sides)	▲	▲	<ul style="list-style-type: none"> <li>- 1 copy</li> <li>- for holders only</li> </ul>
⑧ Family Relationship Certificate	●	●	<ul style="list-style-type: none"> <li>- 1 Original or Notarized Translation</li> <li>- Must include the names of the applicant and both parents(Translation and notarization are required)</li> <li>* If the parents' nationality is not indicated, additional supporting documents verifying the parents' nationality must be submitted.</li> <li>* The notarized translation must have been issued within 1 year from the application date</li> <li>✓ Please carefully read the guideline regarding family relationship certificates below</li> </ul>
⑨ Bank Balance Certificate or Proof of Financial Support	●	●	<ul style="list-style-type: none"> <li>- 1 Original or Notarized Translation</li> <li>- <b>Bank balance certificate (minimum KRW 16,000,000)</b> Applicant or parent's name</li> <li>- <b>If sponsored:</b> <ul style="list-style-type: none"> <li>· Sponsor must be a parent</li> <li>· Submit bank balance certificate + signed Affidavit of Financial Support</li> <li>· Siblings allowed only if parents are unavailable, no other persons are permitted</li> </ul> </li> <li>* Issued within 30 days of application</li> <li>* Valid until expiration date (max. 6 months from issuance)</li> <li>* Korean bank documents: issued within 1 month</li> </ul>
⑩ Passport (Applicant and Parents)	●	●	<ul style="list-style-type: none"> <li>- Copy: 1 (including nationality and photo)</li> </ul>

(● : Required, ▲ : If applicable, - : Not required)

## IV. Required Documents

## 1. Guidelines for Submitting Parents' Nationality and Family Relationship Documents

### ✓ Notes on the Family Relationship Certificate

A. Chinese Applicants: Submit a Household Register (Hukou)

B. Examples of Documents Verifying Family Relationships by Country

- China: Household Register (Hukou) or Certificate of Family Relationship
- Philippines: Family Census
- Mongolia: Certificate of Family Relationship
- Pakistan: Family Certificate
- Sri Lanka: Pawla Certificate
- Myanmar: Family Relationship Certificate (Inhtaungsu Saryin)
- Vietnam: Household Register or Birth Certificate
- Indonesia: Kartu Keluarga (Family Card)
- Bangladesh: Jommo Kagoj or Jommo Sonodpotro (Birth Certificate)
- Kyrgyzstan, Kazakhstan, Uzbekistan, Ukraine, Thailand: Birth Certificate

## 2. Important Notes on degree documents

### ✓ Applicants must submit one of the following three documents as proof of degree

A. Degree (academic) verification documents **with Apostille certification**

(Refer to p.11 for the list of Apostille Convention countries.)

B. Degree (academic) verification documents confirmed by either:

- the Korean Consulate in the country where the applicant's school is located, or
- the consulate of the country where the school is located in Korea

C. For applicants who obtained their academic qualifications in China

(1) **General High School:** Academic credential verification report issued by the Chinese Service Center for Scholarly Exchange (CSCSE), Ministry of Education of China

- \* Applicable only to applicants who obtained their academic qualifications in China
- \* The issuance process takes approximately 30 days, so applicants are advised to apply in advance
- \* The verification report can be issued through China Higher Education Student Information (CHSI) (<http://www.chsi.com.cn>)

(2) **Vocational High School – Submit one of the following:**

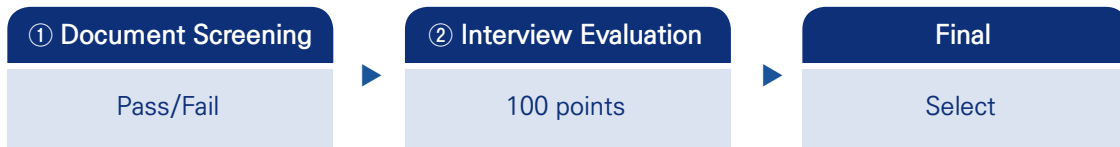
- \* Graduation Certificate issued by the relevant school + verification by the Provincial Education Office + confirmation by the Korean Consulate in China, or
- \* Graduation Certificate issued by the Provincial Education Office + confirmation by the Korean Consulate in China
- \* Academic transcripts must be submitted with notarized English (or Korean) translations

※ Applicants who obtained their academic degrees in China must submit the documents specified above

## V. Selection Process

### 1. Process : Documents and Interview Evaluation

### 2. Process Details



- ※ Applicants who pass the document screening will proceed to the interview stage
- ※ The interview will be conducted by the respective department
- ※ Applicants must receive 70 points or higher out of 100 in the interview to pass

#### ① Document Screening

The submitted documents, including transcripts and financial support documents, will be comprehensively reviewed

#### ② Interview Evaluation

- Applicants residing in Korea: **In-person interview**
- Applicants overseas: **Online video interview**

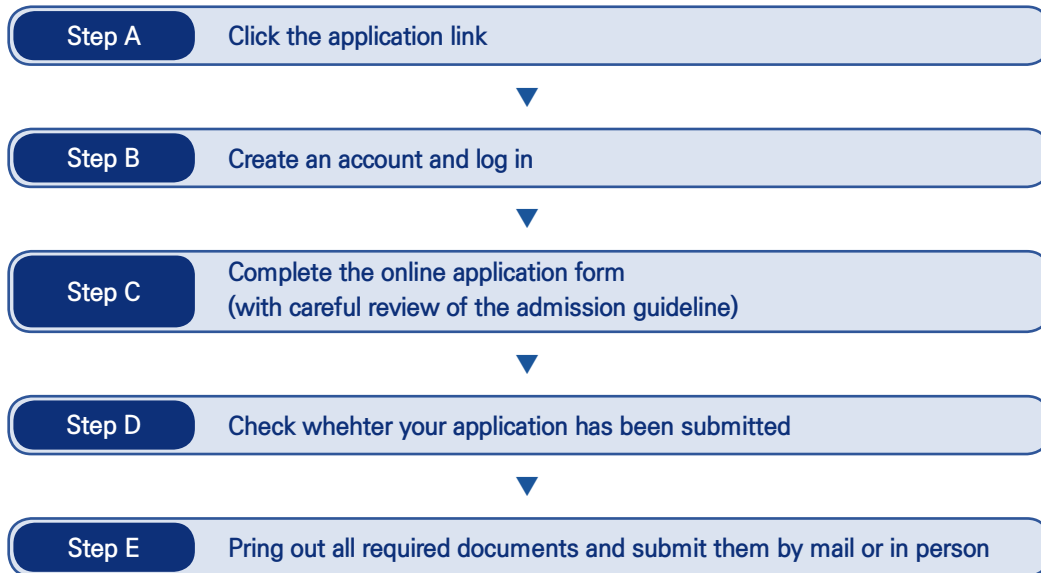
※ Interview Guidelines: For applicants residing overseas, interviews will be conducted online. Applicants must **secure a stable internet connection and an appropriate location in advance** and strictly adhere to the scheduled interview time. **Failure to attend the interview due to the applicant's personal or environmental circumstances will be considered the applicant's responsibility** and may result in **disqualification**

## VI. Application Fee

- Application Fee : **FREE**

## VII. Online Application Procedure & Important Notes

### 1. Online Application steps



### 2. Important Notes

#### ✓ Important Notes regarding the Submission of Documents

- Document Language:** All submitted documents must be written in either English or Korean. Otherwise, a notarized translation must be submitted.
- Submission Deadline:** After completing the online application, all required documents must be submitted within the specified submission period. Failure to do so will result in disqualification from the evaluation process.
- Graduation Certificate Submission:** If you submit a certificate of expected graduation as an expected graduate, you must later submit your graduation certificate to KIT International Programs and Education Center of our school.  
If you do not submit the graduation certificate **by August 27, 2026**, your acceptance will be canceled.
- False Document Consequences:** If it is found that any information in the submitted documents is false or that acceptance was obtained through forgery or other fraudulent means, your acceptance will be canceled, and this cancellation will remain even after admission.
- Disqualification on Non-Submission:** Applicants who fail to submit documents or do not meet eligibility requirements will be disqualified, and submitted documents **will not be returned**.
- Consequences of Fraudulent Acceptance:** If it is confirmed that acceptance was obtained through forgery, alteration, or translation errors, admission may be canceled, and if graduated, enrollment may be revoked.
- Additional Documents:** To ensure accurate eligibility assessment, additional documents may be required beyond those submitted.

✓ **Additional Notes for Applicants**

1. If the tuition fee is not paid within the designated period, the admission offer will be canceled.
2. Applicants must provide accurate contact information, including **an address, telephone number, and email address where they can be reached at any time during the admission process**. Any disadvantage resulting from failure to maintain contact will be the applicant's responsibility. **(Applicants must regularly check their email during the admission period.)**
3. Announcements to applicants during the admission process will be posted on the university's admission website or the website of the International Programs and Language Education Center. If necessary, individual notifications may also be sent via email. Therefore, **applicants are advised to check their email regularly**.
4. Applicants must bring their **admission ticket and a valid identification document** on the day of the interview to verify their identity
5. If a successful applicant is denied a visa or fails to obtain one from the relevant authorities and is therefore unable to enter the country, the admission will be revoked even after the semester has begun. In such cases, a full refund of tuition will be granted only to those who submit supporting documents verifying the reason. However, bank transfer fees may not be refunded.
6. All admitted students must enroll in the National Health Insurance of Korea upon admission and submit the relevant proof to the International Programs and Language Education Center. Failure to enroll in insurance may result in restrictions on course registration and exclusion from certain scholarship benefits.
7. Applicants will be disqualified from the admission process if the applicant or their parents are currently staying in Korea illegally.
8. Admission will be canceled if an applicant is found to be simultaneously enrolled in two or more universities for the same semester.
9. Any matters not specified in this admission guide will be handled in accordance with the university's admission procedures and regulations.
10. Final admitted students must complete visa application, dormitory application, insurance enrollment, course registration, and tuition payment within the designated period according to the provided instructions.
11. This admission guide is prepared in both Korean and English. In the event of any discrepancy in interpretation, the Korean version shall prevail.

## VIII. Additional Information

### 1. Korean Language Classes

All admitted international students must take Korean language courses offered by the university. Free Korean classes are also available.

### 2. Scholarships

#### A. the School of REC

구분	대상		내용		비고
Freshmen	NO TOPIK		55% tuition reduction		First semester
	TOPIK	level 3	70% tuition reduction		First semester, based on the TOPIK score submitted during the application process
		level 4 or higher	100% tuition reduction		
Enrolled Students	At least 12 credits in the previous semester, those with outstanding academic performance will be selected		$3.0 \leq \text{GPA} < 3.5$	Covering 30% tuition	every semester
			$3.5 \leq \text{GPA} < 4.0$	Covering 50% tuition	
			$4.0 \leq \text{GPA} < 4.3$	Covering 70% tuition	
			$4.3 \leq \text{GPA}$	Covering 100% tuition	
Freshmen & Enrolled Students	TOPIK Score obtained (Effective from the date of issuance of the Certificate of Admission)		TOPIK level3	KRW 300,000	- Awarded upon obtaining a higher level than previous level - One-time awarded per level
			TOPIK level4	KRW 500,000	
			TOPIK level5	KRW 700,000	
			TOPIK level6	KRW 1,000,000	
	Frequency of participation in extracurricular program of school of REC		at least 70% participation	KRW 200,000	every semester
	When employed by a local company		KRW 300,000		

※ Scholarships may be subject to change depending on the budget

VIII. Additional Information

B. Other Departments

Category	Eligibility	Scholarship	Remarks
Freshmen	All newly admitted students	55% tuition reduction	First semester
	Completion of the KIT Korean Language Program, TOPIK Level 5 or higher holders at the time of application	covering 25% of tuition fee	First semester, After enrollment
Enrolled Students	At least 15 credits in the previous semester and a GPA of 1.75 or higher, those with outstanding academic performance will be selected	covering 20% – 100% of tuition fee	every semester
	Two or more family members enrolled (including siblings, parents, or spouses)	covering 20% of tuition fee	every semester

※ Scholarships may be subject to change depending on the budget

3. Tuition Fee (2026/per semester)

Field	Admission Fee	Tuition	Total
Engineering (Including School of REC)	0	KRW 1,896,200	KRW 1,896,200
Hunamities & Social Science	0	KRW 1,700,200	KRW 1,700,200

IX. Contact Information

Office	Contact	Address for Document Submission
International Programs and Language Education Center	<ul style="list-style-type: none"> <li>· TEL: 054-478-7223</li> <li>· FAX: 054-478-7222</li> </ul>	(39177) 61 Daehak-ro, Gumi-si, Gyeongbuk Republic of Korea, KIT International Education Building #103, To International Undergraduate Admissions Officer

<b>접수번호</b> (Registration Number)
※ Do not write in this area.

## 2026학년도 전기 신입학 외국인 특별전형 입학원서 (Application for Admission)

※ 반드시 한국어나 영어로 컴퓨터 타이핑할 것(Please computer typing only in Korean or English)

<b>지원사항</b> (Study Field)	<b>지원 학부(과)</b> (School)	
------------------------------	-----------------------------	--

### 인적사항(Personal Information)

<p>1. 이름(Name)                  한국어(Korean) _____                  영 어(English) _____                  모국어(Mother Tongue) _____</p> <p>2. 국적(Nationality) : _____</p> <p>3. 출생지(Place of Birth): _____ / _____ / _____                  시(City) / 도(State) / 국가(Country)</p> <p>4. 성별(Sex) : 남(Male) <input type="checkbox"/> / 여(Female) <input type="checkbox"/></p> <p>5. 생년월일(Date of Birth) : _____ / _____ / _____                  월(Month) 일(Date) 년(Year)</p> <p>6. 여권정보(Information on Passport) :                  ◎ 여권번호(Passport Number) _____                  ◎ 발급일(Date of Issue) : _____ / _____ / _____                  월(Month) 일(Date) 년(Year)                  ◎ 만기일(Date of Expiration) : _____ / _____ / _____                  월(Month) 일(Date) 년(Year)</p> <p>7. 체류자격(Status of Visa) : _____                  (한국거주중인 경우 기입, Only if stay in Korea)</p>	<p>8. 외국인등록번호: Alien Registration No. _____</p> <p>9. 본주소(Address in Home Country)                  ※ 반드시 영어로 기입, 도로명, 도시명, 국가 및 우편번호 포함될 것(Please write in ENGLISH ONLY including street address, city, country and postal code)                  _____                  _____                  _____                  전화(Phone): (+ ) _____ (국가번호/지역번호/전화번호)                  휴대전화(Cell phone): (+ ) _____ (국가번호/전화번호)                  이메일(E-mai): _____</p> <p>10. 현주소(Address in Korea) _____                  _____                  _____                  전화(Phone) : _____</p> <p>11. 대한민국 내 긴급 연락처(Contact Point in Korea)                  이름(Name) : _____                  전화(Phone) : _____                  관계(Relationship) : _____</p>
--	---

### 학력 : 초등학교부터 기록 (Educational Background : Since Elementary School)

학 교 명 Name of Institution	주소 (시, 도, 국가) Location(City, State, Country)	입학일 Date of Entrance	졸업일 Date of Graduation	수학과정 (초, 중, 고, 대) Course Studied	재학기간 Term Studied	연락처 Contact Point	
						전화 Tel.	팩스 Fax.

**최종학교 성적 (High school Grades; of whole semesters)**

학년 (School Year)	1학년 (1styear)	2학년 (2ndyear)	3학년 (3rdyear)	TOTAL	백분율 (100 percentile)
Grades (G.P.A.)				C.G.P.A.:	/100

**언어 능력 (Language Proficiency)**

언어명 (Language)	시험명 (Title of Test)	성적 (Score or level)	시험일 (Date of Test)	수준(Level)		
				Beginning	Intermediate	Advanced
한국어 (Korean)						
영어 (English)						
그 외 (Other language skills)						

**생활관 신청여부 (Application for Dormitory)**

- 신청합니다. (I want to stay at dormitory.)  
 - 식사신청 여부:  식사 신청 안함(No meal)  5일식(5-day meal)  7일식(7-day meal)
- 신청하지 않습니다. (I don't want to stay at dormitory.)

**유학경비 부담 서약서 (Financial Affidavit)**

※ 귀하의 유학경비를 부담할 개인이나 기관명을 쓰세요.  
 [Indicate the person, including yourself(or organization) who will be responsible for your tuition fee and living expenses.]

- 개인 또는 기관명(Name) : \_\_\_\_\_
- 관계(Relationship) : \_\_\_\_\_
- 직업: 개인인 경우(Occupation) : \_\_\_\_\_
- 주소(Address) : \_\_\_\_\_
- \_\_\_\_\_
- 전화번호(Phone No.) : \_\_\_\_\_

※ 본인은 상기 지원자의 유학기간 중 일체의 경비부담을 보증합니다  
 (I guarantee that I will be responsible for this applicant's tuition fee and living expenses during his/her study at your university.)

- 이름(Name) : \_\_\_\_\_
- 서명(Signature) : \_\_\_\_\_
- 연월일(Date) : \_\_\_\_\_ / \_\_\_\_\_ / \_\_\_\_\_  
 월(Month)                      일(Date)                      연도(Year)

**본인은 위 지원서의 내용이 사실임을 확인합니다.**  
 I certify that the information provided on this form is accurate and complete.

\_\_\_\_\_ / \_\_\_\_\_ / \_\_\_\_\_                      \_\_\_\_\_  
**연월일 (Month / Date / Year)**                      **서 명 (Signature)**

**[ SAMPLE ] \*** Applicants must agree to the following items in the online application system before proceeding. No document submission is required.

## Personal Information Collection and Use Consent

Kumoh National Institute of Technology collects, uses, and provides your personal information for the purpose of application submission and admission procedures. Please review this consent form carefully and indicate your consent.

### ▶ Personal Information Collection and Use Consent

Purpose of Collection and Use	Personal Information Collected	Retention and Use Period
Application submission and university admission procedures	Name, gender, nationality, applicant’s address, guardian’s address, place of birth, date of birth, final school academic records, foreign language test scores, visa status, telephone number, mobile phone number, email address, additional contact information, educational background, and intended department/major	<u>Until the completion of the admission process(For admitted applicants: 10 years)</u>
Academic records management and scholarship selection		<b>Permanently</b>

You have the right to refuse consent to the collection and use of your personal information as described above. However, if you refuse to provide consent, you will not be able to submit your application.

☞ Do you agree to the collection and use of your personal information as stated above? **agree**  **disagree**

### ▶ Consent to the Provision of Personal Information to Third Parties

Purpose of Collection and Use	Personal Information Collected	Retention and Use Period
Application submission and university admission procedures	<b>Passport Number</b>	<u>Until the completion of the admission process (For admitted applicants: 10 years)</u>

You have the right to refuse consent to the provision of personal information to third parties as described above. However, if you refuse to provide consent, you will not be able to submit your application.

☞ Do you agree to the collection and use of your personal information as stated above? **agree**  **disagree**

### ▶ Consent to the Collection and Use of Unique Identifiers

Recipient	Purpose of Provision	Items to be Provided	Retention and Use Period
<u>Korean Council for University Education (KCUE)</u>	<u>Provision of statistical data to the Korean Council for University Education</u>	Admission period, name, Alien Registration Number or passport number, application number, university code, admission/deposit status, place of application, date of application, application result, admission type, program/department name, academic field code, high school code, high school type code, year of graduation, registration date classification Retention and Use Period: Until the purpose of processing has been achieved	<u>Until the purpose of processing has been achieved</u>

You may refuse to consent to the provision of your personal information to third parties. Even if you refuse, you may still submit your application; however, there may be limitations in the selection process for the International Undergraduate Freshman Special Admission.

☞ Do you agree to the provision of your personal information to third parties as described above? **agree**  **disagree**

### ▶ Additional Information

In accordance with Article 15(1)2 of the Personal Information Protection Act, personal information is collected and used without the data subject’s consent.

Purpose of Collection and Use	Personal Information Collected	Retention and Use Period
Application submission and university admission procedures	Alien Registration Number	Enforcement Decree of the Higher Education Act Article 73 (Processing of Unique Identifiers)
Academic records management		

Year      Month      Date

Name : \_\_\_\_\_ (Signature or Seal)

**To the President of Kumoh National Institute of Technology**

# [Information on the Apostille Convention]

## 1. Apostille Convention

: The Convention Abolishing the Requirement of Legalization for Foreign Public Documents

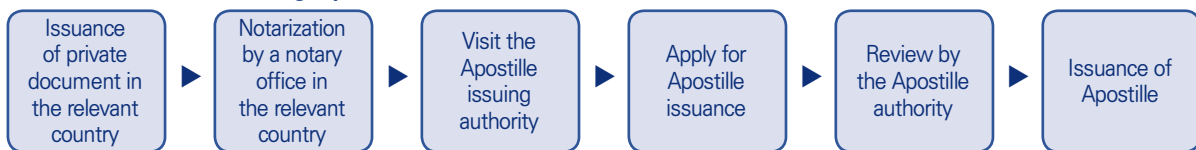
- A. Documents issued in countries that are parties to the Apostille Convention and bear an Apostille shall be recognized as having the same legal effect as consular legalization
- B. For documents that require consular authentication (e.g., for the issuance of a Certificate of Visa Issuance Eligibility), documents authenticated either by consular legalization (for non-member countries) or by Apostille (for member countries) will be accepted

## 2. Issuance process

### A. Public Documents (e.g., public/national schools)



### B. Private Documents (e.g., private universities)\*



\* For private documents, procedures may vary depending on the notary and attorney laws of the respective country. Generally, documents notarized in the relevant country can be submitted for Apostille certification

## 3. Apostille Convention Member Countries (as of March 30, 2025)

Territory	Nations/Regions
Asia & Oceania	New Zealand, Niue, Marshall Islands, Mauritius, Mongolia, Vanuatu, Bahrain, Bangladesh, Brunei, Samoa, Saudi Arabia, Singapore, Oman, Australia, Uzbekistan, Israel, India, Indonesia, Japan, China (including Macau and Hong Kong), Cook Islands, Kyrgyzstan, Tajikistan, Tonga, Pakistan, Palau, Fiji, Philippines, Republic of Korea
Europe	Georgia, Greece, Netherlands, Norway, Denmark, Germany, Latvia, Russia, Romania, Luxembourg, Lithuania, Liechtenstein, North Macedonia, Monaco, Montenegro, Moldova, Malta, Belgium, Belarus, Bosnia and Herzegovina, Bulgaria, Cyprus, San Marino, Serbia, Sweden, Switzerland, Spain, Slovakia, Slovenia, Armenia, Iceland, Ireland, Azerbaijan, Andorra, Albania, Estonia, United Kingdom, Austria, Ukraine, Italy, Czech Republic, Kazakhstan, Kosovo, Croatia, Türkiye, Portugal, Poland, France, Finland, Hungary
North America	United States (including Guam, Northern Mariana Islands, Saipan, Puerto Rico), Canada
Latin America	Guyana, Guatemala, Grenada, Nicaragua, Dominican Republic, Commonwealth of Dominica, Mexico, Barbados, Bahamas, Venezuela, Belize, Bolivia, Brazil, Saint Lucia, Saint Vincent and the Grenadines, Saint Kitts and Nevis, Suriname, Argentina, Antigua and Barbuda, Ecuador, El Salvador, Honduras, Uruguay, Chile, Costa Rica, Colombia, Trinidad and Tobago, Panama, Peru, Paraguay, Jamaica
Africa	Namibia, South Africa, Liberia, Lesotho, Malawi, Morocco, Botswana, São Tomé and Príncipe, Senegal, Seychelles, Eswatini, Cabo Verde, Burundi, Tunisia, Rwanda

※ Please refer to the Ministry of Foreign Affairs Overseas Safety Travel website ([www.0404.go.kr](http://www.0404.go.kr)). Any future changes in member countries shall be applied accordingly